

SOFREL LogUp

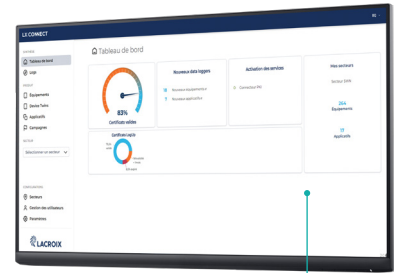
The simple, optimal, and cyber-secure data logger solution for monitoring water networks and remote sites



My SOFREL LogUp mobile app
to reduce on-site commissioning time



The SOFREL LogUp data logger
a unique and scalable hardware model for all drinking water and wastewater networks applications



LX CONNECT centralization platform
For remote fleet management and automated network cybersecurity



IEC 62443
Solution designed in compliance with standard specification



Multiple applications

- ✓ District Metered Area (DMA) sectorization
- ✓ Reservoir management

✓ Self-monitoring and continuous diagnostics

✓ Combined sewer overflow monitoring

✓ Monitoring of water quality parameters



- **Eco-designed**, robust, and compact data logger
- Evolvable software and water industry functions remotely
 - Automated **IEC 62443 cybersecurity**
- **Centralized management** of equipment and users
 - **Remote modification** of configurations
 - Dashboards for **monitoring fleet operation**
- Enhanced **waterproofing** and long-lasting **internal battery**

