



LX Connect for Tegis®



Screen shot from the welcome screen showing the status of all the street lighting cabinets
Available with **Tegis Lighting** and **Tegis Lighting Plus**

STREET LIGHTING CABINET MONITORING

Monitoring street lighting cabinets offers an overview of **the operating status of the pool in real time** on a map from Google Maps.

Cabinets with faults are immediately identifiable in a highly visual manner.

At the same time, alerts can be sent by email or text message, with filters that can be configured according to the type of faults.

The components monitored on the LX Connect platform are generally: the main power supply, the public lighting switch, the street lighting outputs, a door opening switch, a surge arrester, etc.

THE ADVANTAGES:

- Up to 22 (2 x 11) additional monitoring inputs on option.
- **Help with fault finding** with the "fault analysis" module that makes it possible to study the distribution of faults on different lines.

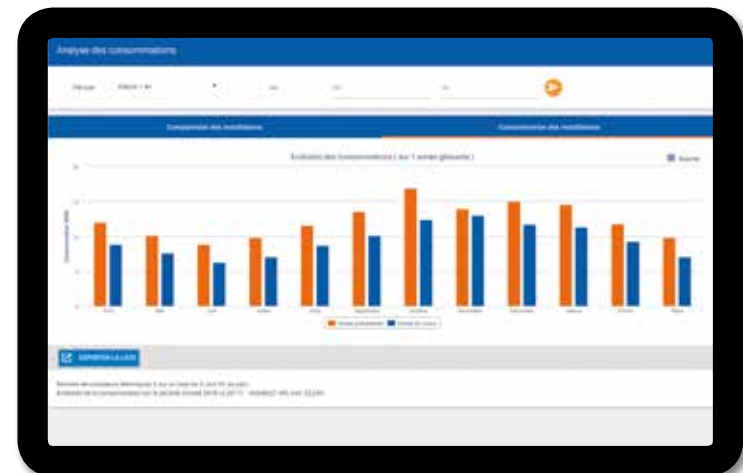
FEEDBACK AND ANALYSIS OF CONSUMPTION OF THE STREET LIGHTING CABINET

The feedback and analysis of consumption data from the cabinet is a real **priority tool for future investments**. You can easily identify the priority areas to renovate, measure the savings achieved by these investments and **show the results**.

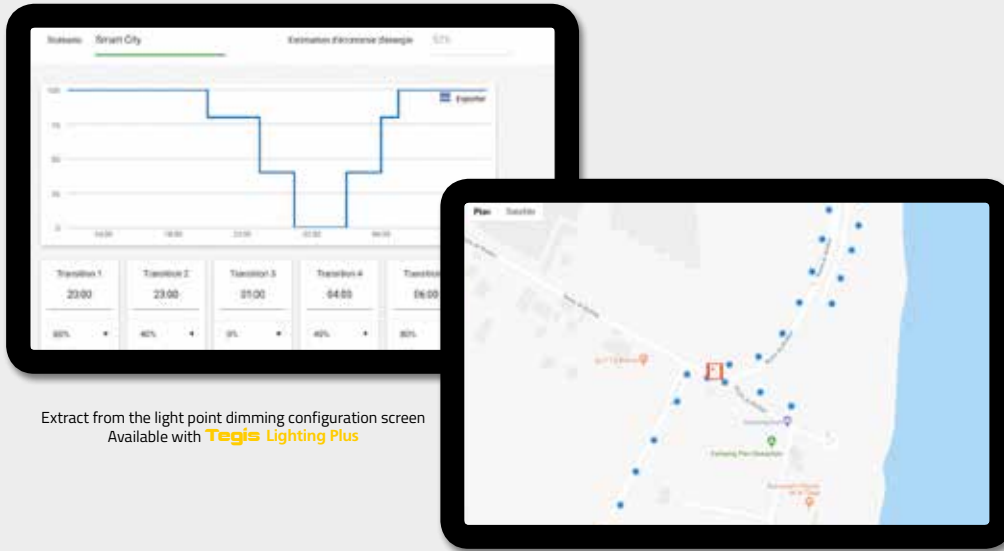
Energy consumption with a consumption index, operating times and instantaneous power. Measure the power factor to visualise the ageing of the installations.

THE ADVANTAGES:

- Different levels of analysis with filtering per cabinet or group of cabinets and by period.
- Alerts for anomalies with upper and lower limits to measure and act on discrepancies.
- Displaying the night profile per cabinet to view the savings achieved by the new systems (such as SensyCity detection, Tegis Lighting Plus dimming, etc.).



Extract from the consumption analysis page
Available with **Tegis Lighting** and **Tegis Lighting Plus**



Extract from the light point dimming configuration screen
Available with **Tegis Lighting Plus**

Screen shot from the street lighting cabinets pool and light point monitoring screen
Available with **Tegis Lighting Plus**

DIMMING AND LIGHT POINT MONITORING

Light point dimming generates up to 60% energy savings for your equipment, by the remote programming of dimming scenarios that can be adapted to every light source or group of light sources.

Monitoring every light source helps optimise the management of street lighting equipment by eliminating night patrols and optimising preventive and curative maintenance interventions.



THE ADVANTAGES:

- Compatible with the SensyCity detection system: dimming can be configured remotely using the LX Connect platform.

A PLATFORM WITH THREE LEVELS OF SECURITY



Cloud security

This layer of security is provided by our service provider that protects the physical resources of the LX Connect environments and guarantees that the infrastructure is a secure place to operate the system. The data are backed-up daily, to ensure their integrity.



Security of the communication layer

All the communications with the different participants and the associated data are encrypted and sent through secure tunnels.



Platform and data security

Access to the platform is protected by three levels of authentication and authorisation (Front end, Back end, SGBD).

Data protection

We have total control over the data throughout the management of their life cycle. Our host is committed to a data management policy that is based on the confidentiality and protection of the data.

The data reported and used on the LX Connect platform remain the customer's property.

