



Pre-cast foundation block
 Patented
 Registered design



Peplic Fab is a ready-made system of semi-rigid adjusting and insulating base plates, specifically designed to be used on pre-cast foundation blocks.

The copolymer PP structure supporting the 4 semi-rigid base plates of the Peplic Fab guarantees:

- optimal positioning of the base plates on the pre-cast foundation block.
- a quick and flawless installation.
- the base plates are held in place when tightening the lamppost base plate.

Compatible with all forms of pre-cast foundation blocks, providing perfect stress homogenisation.

Corrects deviations up to 2.5°, absorbs foundation block and lamppost base plate irregularities.

Avoids all direct contact between the metal and concrete (a significant source of corrosion).

ADVANTAGES

Easy and fast lamppost verticality adjustment using threaded rods and nuts and Peplic compression plate.

Base plate assembly in grooved EPDM for reinforced lamppost durability on pre-cast foundation blocks.

Patented and certified.

TECHNICAL CHARACTERISTICS

Materials:

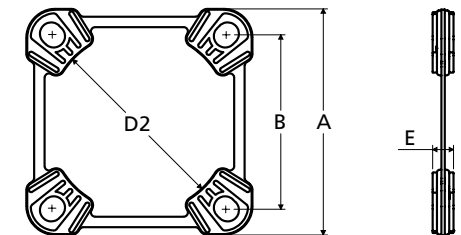
- Copolymer polypropylene structure.
- 4 moulded synthetic rubber base plates (grooved EPDM).
- Very high resistance to chemical and atmospheric agents.

Mechanical characteristics:

- Resistance to temperature: from -25°C to +120°C.
- Residual elasticity of Peplic compressed at 30% = 55% after 20 years.
- Usable compressibility range: 60% of the total initial thickness, i.e. 65 kg/cm².

Certifications

- Compliance certified by inspection bodies for the mechanical control of street lighting structures.
- Ten-year guarantee of public equipment.
- Please consult us for other dimensions and shapes.



	200	300
A (mm)	260 x 260	360 x 360
B (mm)	200 x 200	300 x 300
E (mm)	24	24
D2 (mm)	210	350