



JUNCTION BOXES

Polypak



IP44/IP54*-IK08

Class 2

Patented components



PYB

PYH

As short as Minipak and as wide as Interpak: the junction box specially designed for high modules and wide cable sections, for posts with a min. inner diameter of 110mm.

The first junction box with a scalable IP (from IP44 to IP54), it adapts to various constraints in the field.

The Polypak can accept up to 2 x 35mm² network cables or 3 x 25mm² network cables and 4 lighting fixture cables.

Integration of additional devices such as ADD protection, night switch, remote management, etc.

Removable terminal block support without tools for easy connection and quick maintenance on site.

Open sides and stiffened back to facilitate connection.

Tool-free mounting bracket adjustable.

Protective flexible cone to facilitate the frontal insertion of power cables.

ADVANTAGES

Large yet compact: the junction box can accommodate up to 3.5 low modules or 3 high modules.

Simple installation and maintenance: transparent high window for optimum visibility of the protection zone and opening system with quarter-turn captive screw lock.

Modular: it can integrate high modules, low modules, terminals or terminal blocks.

Upgradable and reversible IP.

TECHNICAL CHARACTERISTICS

Max. capacity

- Up to 2 x 5G25mm² or 4 x 35mm² network cables.
- Up to 3 x 5G16mm² or 4 x 25mm² network cables.
- Up to 4 x 3G2.5mm² rigid lighting fixture cables.

Casing

- Polycarbonate, self-extinguishing.
- IP54 sealing gasket : TPE (elastomer)
- IP44/IP54 in accordance with IEC 60529 (open junction box: IP2X).
- IK08 in accordance with EN 62262.
- Class 2 (can also be supplied with insulated earth terminal).
- -40°C to +130°C.

Product standards

- EN 61439-2.

*IP54 optional : get with a specific sealing gasket

Installation standards

- NF C17-200 and associated guides.

Standard colour :

- Please contact us for other colours.

Mounting :

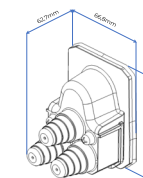
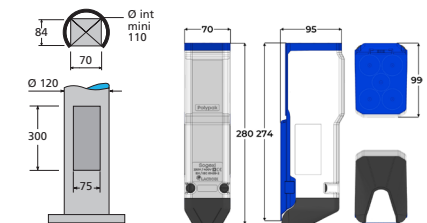
- Fixing bracket 1 or 2 hooks.
- Possible vertical rail mounting with M6 screws.

Optional :

- IP54 sealing gasket
- Terminal block: marking of the terminals to facilitate maintenance.

Delivery :

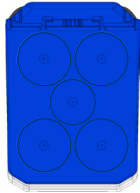
- Pre-wired with high-temperature siliconecoated wires and crimped lugs.
- Supplied with configuration labels and cable clamp.



IP54 sealing gasket

LIGHTING FIXTURE OUTPUT CABLES

Via the bottom (PYB) or via the top (PYH).

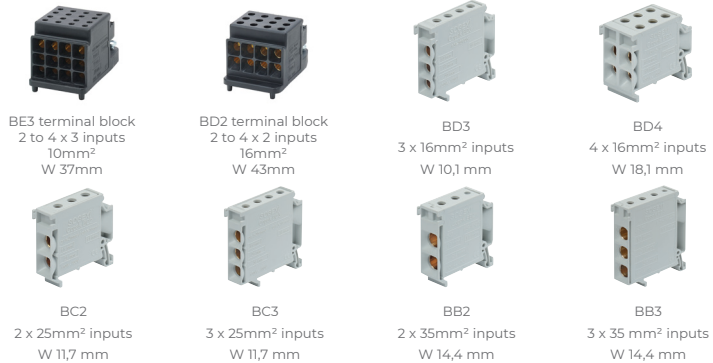


Main configurations

	Standard	Options	
		TET	Cable glands
Via the BOTTOM (PYB)	Possible*	-	-
Via the TOP (PYH)	1 cable (7 to 10mm - TET 7/10)	5 cables (7 to 10mm - 5xTET 7/10)	4 cables (6 to 12mm - 4xM20)
		5 cables (10 to 14mm - 4xTET 10/14 + 7 to 10mm - 1x TET 7/10)	1 cable (9 to 17mm - 1xM25)

* According to configurations.

CONNECTION - Integrated terminals and terminal blocks (non-exhaustive list)



BE3 terminal block
2 to 4 x 3 inputs
10mm²
W 37mm

BD2 terminal block
2 to 4 x 2 inputs
16mm²
W 43mm

BD3
3 x 16mm² inputs
W 10,1 mm

BD4
4 x 16mm² inputs
W 18,1 mm



BC2
2 x 25mm² inputs
W 11,7 mm



BC3
3 x 25mm² inputs
W 11,7 mm



BB2
2 x 35mm² inputs
W 14,4 mm

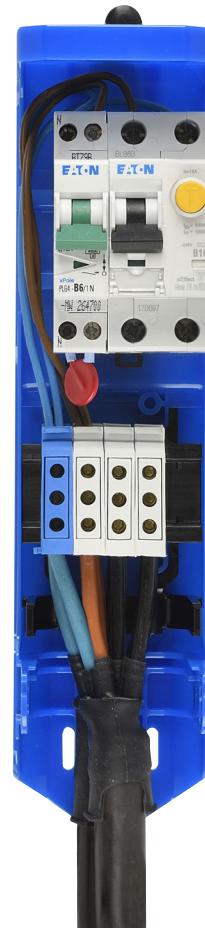


BB3
3 x 35 mm² inputs
W 14,4 mm

Main max. configurations

	≤ 10 mm ²	≤ 16 mm ²	≤ 25 mm ²	≤ 35 mm ²
2 network cables	4 BE2 terminal block max.	5 BD2 terminal max.	5 BC2 terminal max.	4 BB2 terminal max.
3 network cables	4 BE3 terminal block max.	5 BD3 terminal max.	5 BC3 terminal max.*	4 BB3 terminal max.

Usable width of the connection zone: 63 mm.



PROTECTIONS & DEVICES

Max. volume available (mm): W 63 x D 70/74 x H 86



FP, FN, FPN, F2P
W 18/36mm

DPN, D2P
W 18/36mm

ID
W 36mm

DDR
W 36mm

PFM, PFG
W 18mm

IDIL-10
W 28mm

TNX24
W 36mm

Max. number of modules in the protection zone.
(W = 18mm)

Bottom modules only

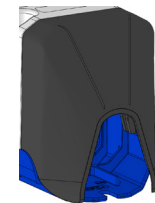
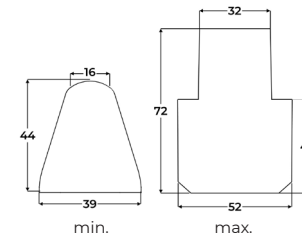
3,5

Top modules only

3

Usable width of the protection zone: 63 mm.

NETWORK CABLES



Main max. configurations

	4x 16mm ²	5G 16mm ²	4x 25mm ²	5G 25mm ²	4x 35mm ²	5G 35mm ²
2 cables	●	●	●	●	●	-
3 cables	●	●	●*	●*	●*	-

*Limit configurations: tight wiring.