



## JUNCTION BOXES

# Citypak



IP44-1K08

Class 2

Patented components



The lamppost junction box that is entirely dedicated to smart lighting for posts with a min. inside diameter of 84mm\*.

The Citypak can connect up to 2 x 25mm<sup>2</sup> network cables or 3 x 16mm<sup>2</sup> network cables and 2 lighting fixture cable outputs.

Up to 4 functions at the same time (connecting, protecting, managing and detecting): flexibility and scalability for smart lighting.

Open sides and stiffened back to facilitate connection.

Bottom cover easily fitted for secure maintenance of the connections.

Protective flexible cone to allow power cables to be inserted through the front.

## ADVANTAGES

Three stages: the highest enclosing capacity on the market for small posts.

Long transparent top cover to view and access two stages of protections. Central locking by ¼ turn captive screw.

Fixing bracket, tool-free adjustment over 170mm, with rear hooking.

## TECHNICAL CHARACTERISTICS

### Max. capacity

- Up to 2 network cables, 4 x 25mm<sup>2</sup>.
- Up to 3 x 5G16mm<sup>2</sup> network cables.
- Up to 2 x 3G2.5mm<sup>2</sup> lighting fixture cables.

### Casing

- Polycarbonate, self-extinguishing.
- IP44 in accordance with IEC 60529 (open junction box: IP2X).
- IK08 in accordance with EN 62262.
- Class 2.
- -40°C to +130°C.

### Product standards

- EN 61439-2.

### Installation standards

- NF C17-200 and associated guides.

\* For vertical rail (rail-C): Min. int. Ø 89mm.

### Standard colour

- Please contact us for other colours.

### Mounting

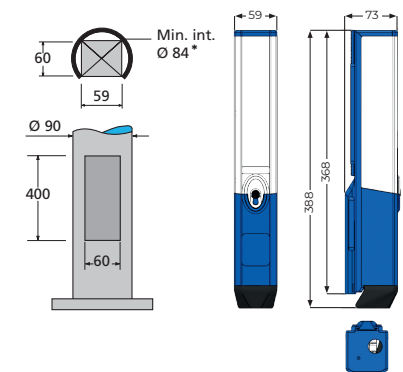
- Fixing bracket 1 hook
- Possible vertical rail mounting with M6 screws.

### Optional

- Terminal block: marking of the terminals to facilitate maintenance.

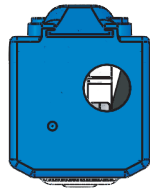
### Delivery

- Pre-wired with high-temperature silicone-coated wires and crimped lugs.
- Supplied with cartridge fuses, configuration labels and cable clamp.



**LIGHTING FIXTURE OUTPUT CABLES**

Via the bottom or the top (standard).



Main configurations

	Standard	Options	
		TET	Cable glands
Via the BOTTOM	2 cables (7 to 14mm)	-	-
Via the TOP	1 cable (7 to 10mm - TET 7/10)	2 cables (7 to 10mm - 2 x TET 7/10)	2 cables (6 to 12mm - 2 x M20)
		2 cables (10 to 14mm - 2 x TET 10/14)	1 cable (9 to 17mm - 1 x M25)

**CONNECTION** - Integrated terminals and terminal blocks



BE2 terminal block  
2 to 4 x 2 inputs, 10mm<sup>2</sup>  
W 37mm



BE3 terminal block  
2 to 4 x 3 inputs, 10mm<sup>2</sup>  
W 39mm



BD2 terminal block  
2 to 4 x 2 inputs, 16mm<sup>2</sup>  
W 43mm



BD3 terminal block  
2 to 4 x 3 inputs, 16mm<sup>2</sup>  
W 43mm



BD2  
2 x 16mm<sup>2</sup> inputs  
W 10.1mm



BD3  
3 x 16mm<sup>2</sup> inputs  
W 10.1mm



BD4  
4 x 16mm<sup>2</sup> inputs  
W 18.1mm

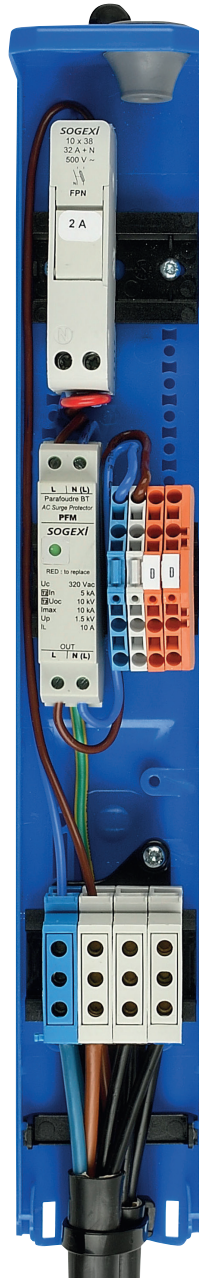


BC2  
2 x 25mm<sup>2</sup> inputs  
W 11.7mm

Main max. configurations

	≤ 16mm <sup>2</sup>	≤ 25mm <sup>2</sup>
2 network cables	4BD2 terminal block max. or 5 BD2 terminals max.	4 BC2 terminals max.
3 network cables	4BD3 terminal block max. or 5 BD3 terminals max.	-

Usable width of the connection zone: 54mm.



**PROTECTIONS & DEVICES** - Max. volume available (mm): W 54 x D 48 x H 86



FP, FN, FPN  
W 18mm



F2P  
W 36mm



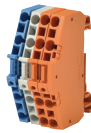
PFM  
W 18mm



IDIL-10  
W 28mm



ST2  
W 28mm



4R4  
W 23mm

Max. recommended combinations

		∅	PFM W 18mm	IDIL W 28mm	ST2 W 28mm
FP or FN	W 18mm	1FP + 1FN	(FP + FN) + 1PFM**	-	-
FPN	W 18mm	3FPN**	2FPN + 1PFM**	1FPN + 1IDIL	1FPN + 1ST2
F2P	W 36mm	1F2P	1F2P + 1PFM**	-	-

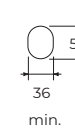
Usable width of the protection zone: 54mm.

**INTERMEDIATE ZONE** - Max. combinations recommended

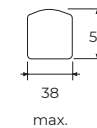
		∅	PFM W 18mm	IDIL W 28mm	ST2 W 28mm
FP or FN	W 18mm	1FP + 1FN	(FP + FN) + 1PFM**	-	-
FPN	W 18mm	3FPN**	2FPN + 1PFM**	1FPN + 1IDIL	1FPN + 1ST2
F2P	W 36mm	1F2P	1F2P + 1PFM**	-	-

Usable width of the intermediate zone: 54mm.

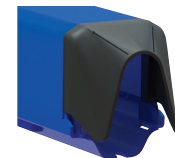
**NETWORK CABLES**



36  
min.



38  
max.



Main max. configurations

	4X 10mm <sup>2</sup>	5G 10mm <sup>2</sup>	4X 16mm <sup>2</sup>	5G 16mm <sup>2</sup>	4X 25mm <sup>2</sup>	5G 25mm <sup>2</sup>	Lighting fixture cables
2 cables	●	●	●	●	●*	-	1
2 cables	●	●	●	●	●*	-	2
3 cables	●	●	●	●*	-	-	1
3 cables	●	●	●	●*	-	-	2

\*With max. 3G 1.5mm<sup>2</sup> rigid lighting fixture cable.

\*\* Limit configurations: tight wiring.