

# SOFREL WEB LS

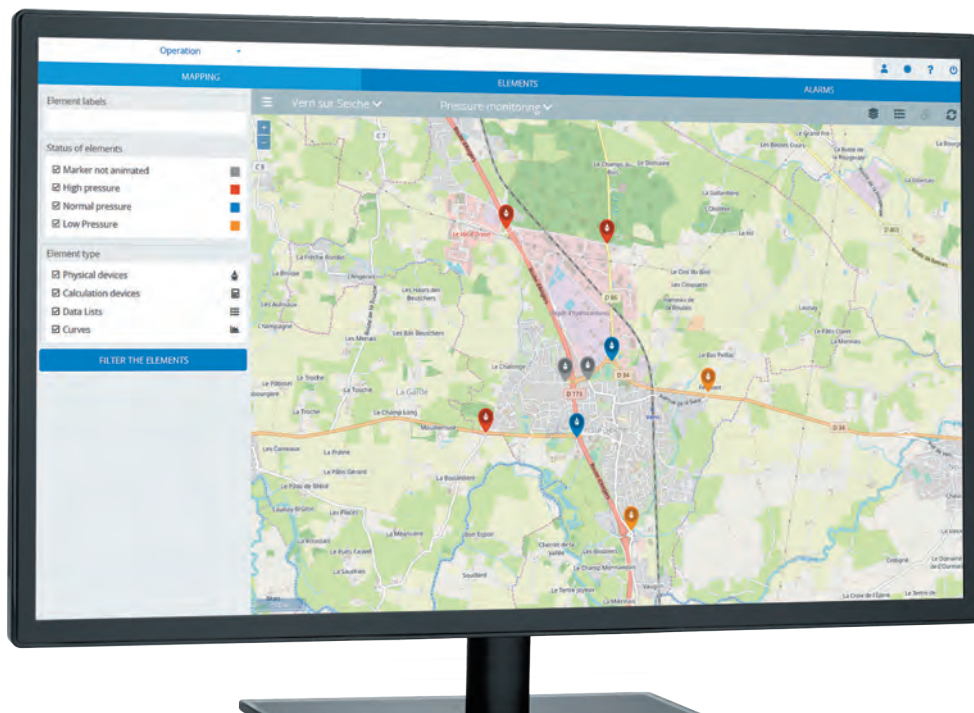
Secure Cloud data centralisation and analysis





# SOFREL WEB LS

## SECURE CLOUD DATA CENTRALISATION AND ANALYSIS



REMOTELY MANAGE YOUR DATA LOGGERS WITHOUT WORRYING ABOUT DATA HOSTING!

- ▶ Water network geographical map view
- ▶ Sectoral analysis tables creation
- ▶ Data logger status monitoring and alarm management
- ▶ Remote configuration and management
- ▶ Provision of data for upstream analysis systems

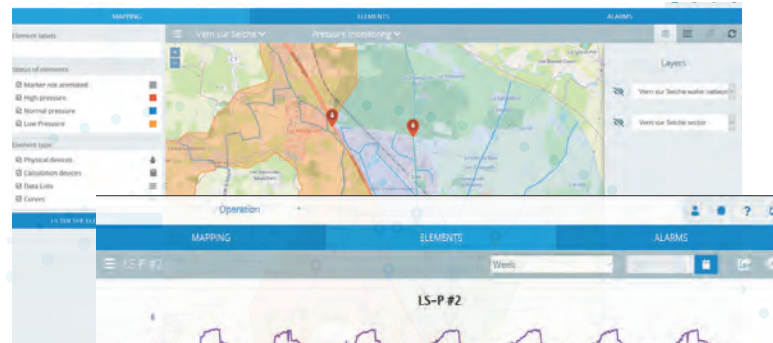
CHOOSE THE SUBSCRIPTION BEST SUITED TO YOUR NEEDS

- MANAGEMENT: Data logger deployment **FREE**
- OPERATION: Data processing and analysis
- WEB SERVICES: Interface for upstream data integration



## NETWORK AND EQUIPMENT MAPPING

- Network overview
- On-site Data logger geolocation
- Import of layer files for network and zone display
- Data display by geographical area and sectoral analysis
- Instant access of network and zone information



The screenshot shows a table with columns for 'ELEMENTS' and 'ALARMS'. The table contains data for various elements, including their names, dates, and flow rates.

NAME	DATE	DAILY FLOW	DAILY MINIMAL FLOW	MIN FLOW
IS-Flow H2O Aquapanel	19/03/2020 06:00:00	97 m3	1 m3/h	4 m3/h
IS-Flow H2O Octon	19/03/2020 06:00:00	99 m3	1 m3/h	5 m3/h
IS-Flow KICHNE Akwaflex	19/03/2020 06:00:00	97 m3	1 m3/h	7 m3/h
IS-Flow DEMENS MAGROD	19/03/2020 06:00:00	92 m3	0 m3/h	4 m3/h
IS42 #1	19/03/2020 06:00:00	842 m3	12 m3/h	59 m3/h
IS42 #2	19/03/2020 06:00:00	842 m3	12 m3/h	59 m3/h
IS42 #3	19/03/2020 06:00:00	842 m3	12 m3/h	59 m3/h
IS42 #4	19/03/2020 06:00:00	842 m3	12 m3/h	59 m3/h
IS42 #5	19/03/2020 06:00:00	842 m3	12 m3/h	59 m3/h
IS42 #6	19/03/2020 06:00:00	842 m3	12 m3/h	59 m3/h

Summary statistics at the bottom of the table:

Average	543	Average	7	Average	36
Maximum	842	Minimum	12	Maximum	59
Minimum	92	Minimum	0	Minimum	1

Intuitive navigation for efficient processing and analysis of data

## SECTORAL ANALYSIS TABLES

- Create sectoral analysis tables based on multiple data (e.g. district metering, pressure monitoring, self-monitoring, etc.)
- Site performance overview via sectoral analysis
- Instant access to data for analysis

## DIRECT ACCESS TO A NETWORK DEVICE

- Remote configuration and management
- Viewing of curve charts with statistics
- Export curve charts and data in Excel



# SOFREL WEB LS - Specifications

Centralised management	Data logger grouping and supervision
	Battery level and communication performance monitoring
	Data logger configuration: centralised storage and remote modification
	Operating exceptions
Mapping and sectoral analysis	Interactive mapping
	Import network and zone layers
	Data display by sectoral analysis area (district metering, self-monitoring, pressure point monitoring, etc.)
Data analysis	Sectoral analysis table
	Curves
	Export data in Excel
	Data storage for 3 years
Data processing	Daily, weekly, monthly balances
	Event-based balances
	Average flow rates
	Arithmetical, Boolean operators and comparisons
Information transmission	Automated data transmission via e-mail
	Alerting via e-mail
	Transmission to FTP site

SmartLS application	Android smartphone app downloadable free from Google Play
	Alarm viewing and acknowledgement
	Viewing of current values
	Alarm acknowledgement and device access itinerary calculation
Interface for third-party applications	GPS position reading and automatic transmission to WEB LS
	Web services protocol
	Device list
	Information list for each device
Individual administration	All data archived for desired period
	Real-time alarms
	Operator, Subscriber: Data centralisation and analysis
	Distributor: Service provided as OEM
	Logo and entry point customisation



**LACROIX - Environment**

2, Rue du Plessis

35770 Vern-sur-Seiche · France

Tel : +33 (0)2 99 04 89 00

info.environment@lacroix.group

[www.lacroix-environment.com](http://www.lacroix-environment.com)